

Pelvic Nodal Consensus CTV Contours:
High Risk/ Locally Advanced
Adenocarcinoma of the Prostate

Colleen A F Lawton MD
Medical College of Wisconsin

Based on Data Presented Consensus Was Obtained Including:

- Treatment of Presacral LNs (subaortic only)
- 7mm around iliac vessels, carving out bowel, bladder and bone
- Commence contouring at distal common iliac vessels at L5/S1 interspace
- Stop external iliac contours at top of femoral heads (boney landmark for Ing. ligament)
- Stop contours of obturator LNs at top of symphysis pubis

23



24



24/93

25



26



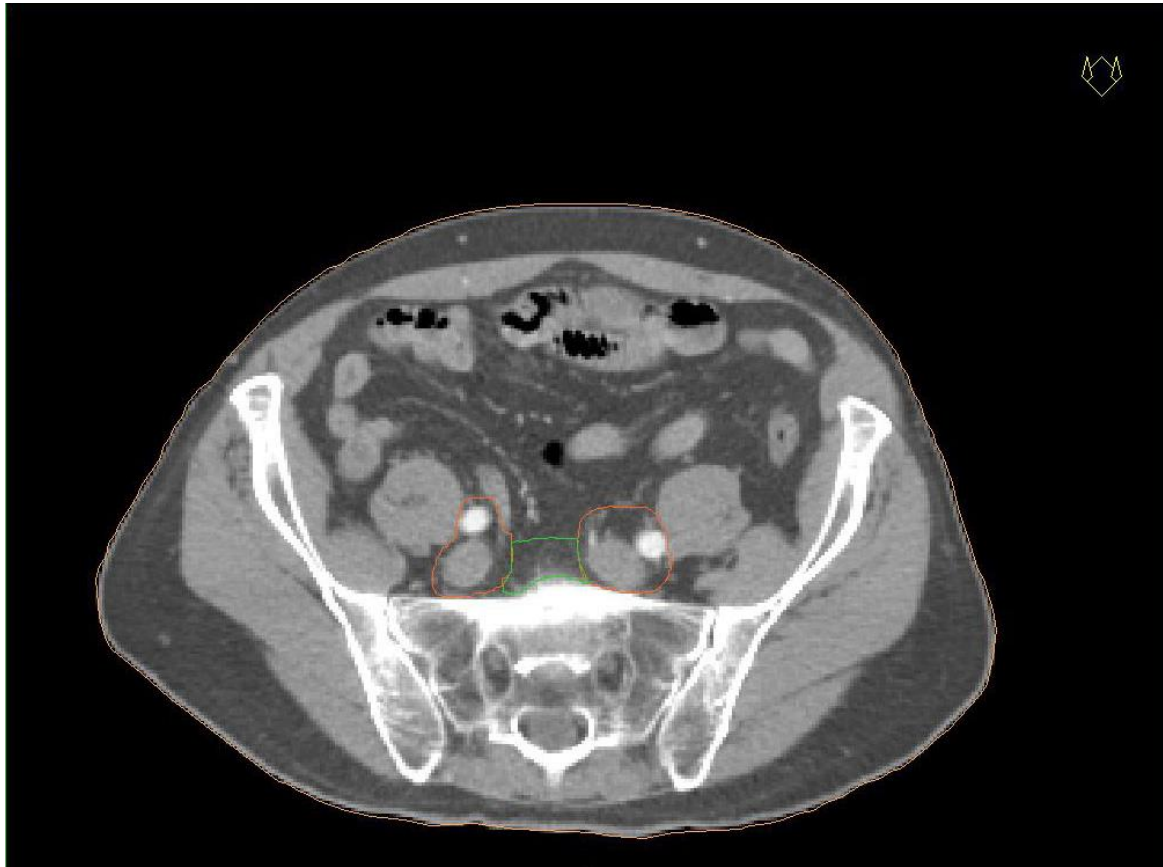
26/93

27



27/93

28

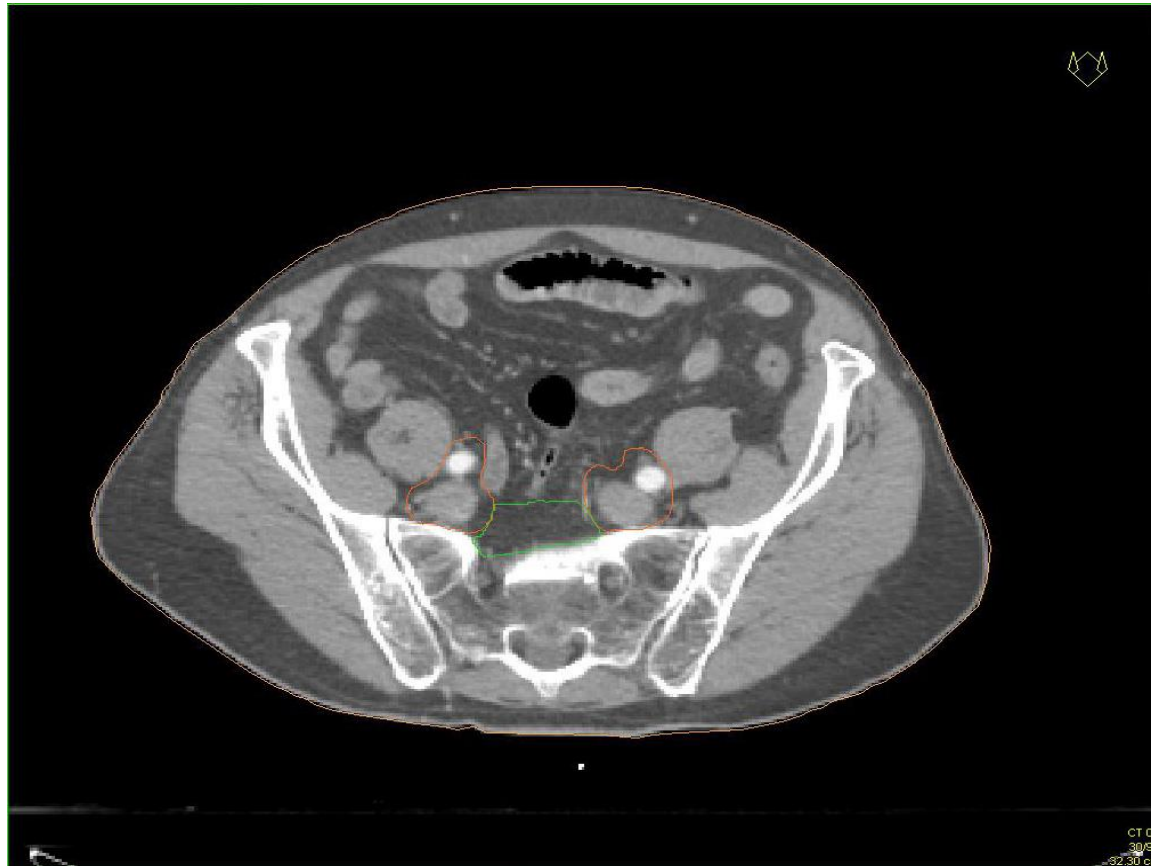


29



29/93

30



30/93

31



31/93

32



32/93

33



33/93

34



34/93

35



35/93

36



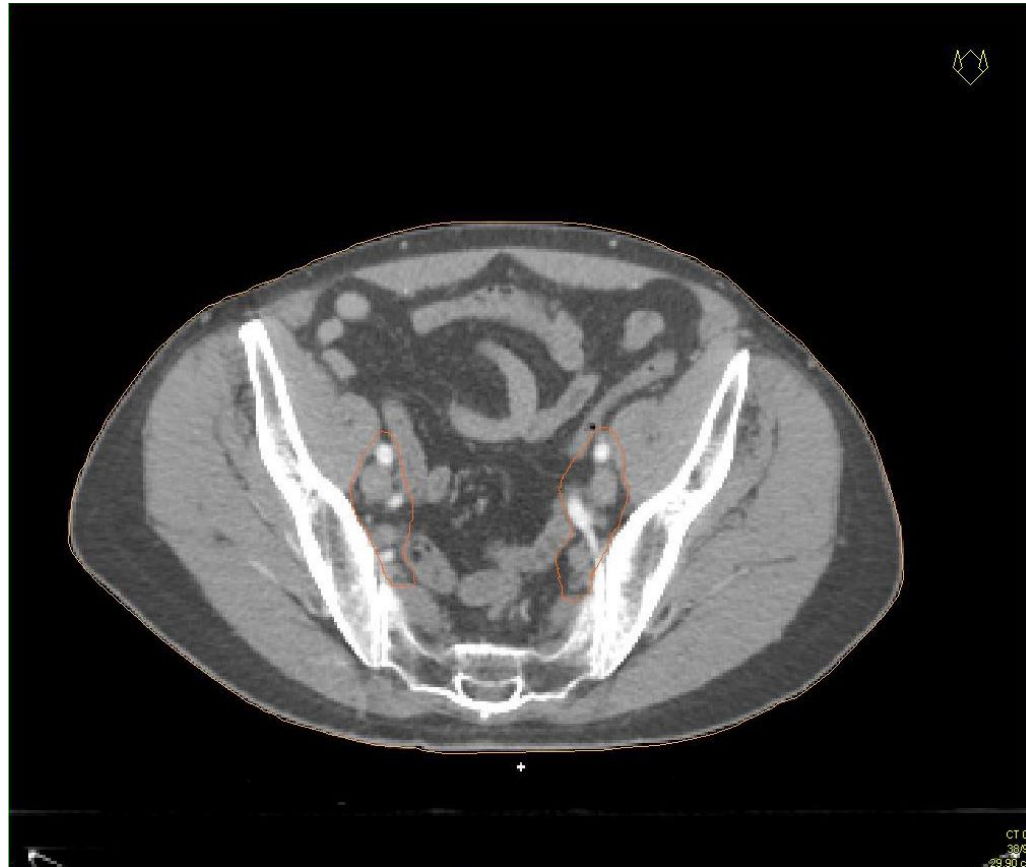
36/93

37



37/93

38



38/93

39



39/93

40



40/93

41



41/93

42



42/93

43



43/93

44



44/93

45

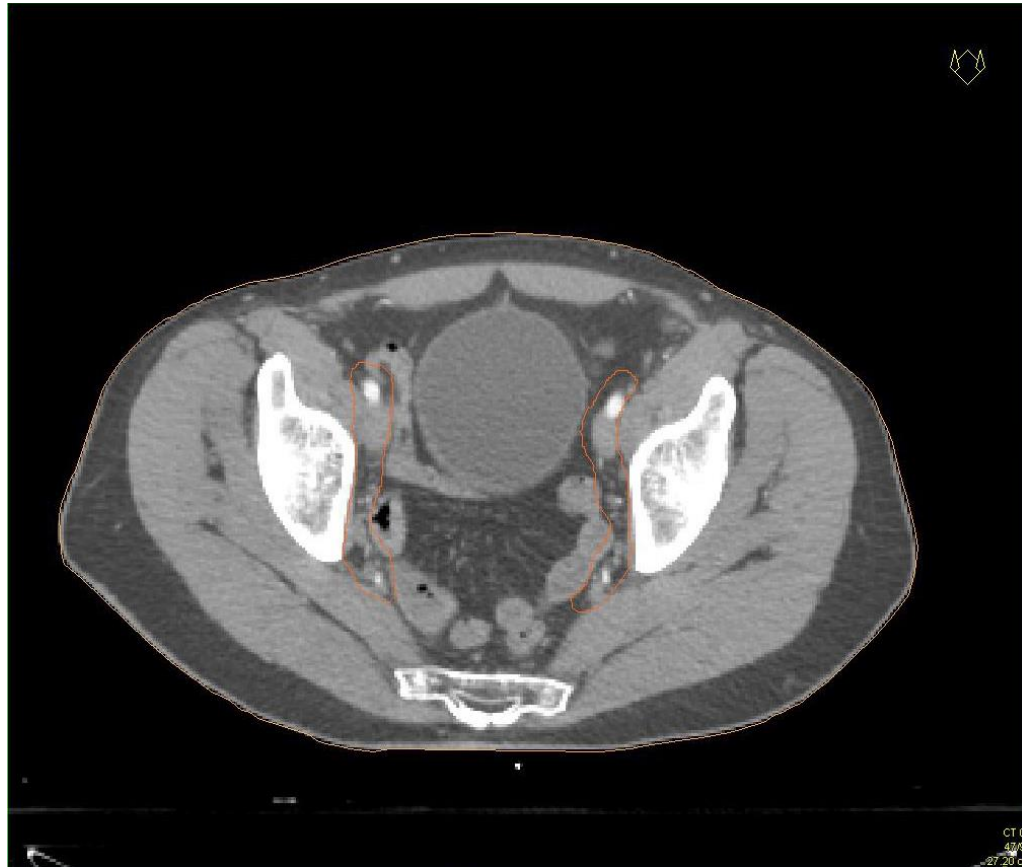


45/93

46



47



47/93

48

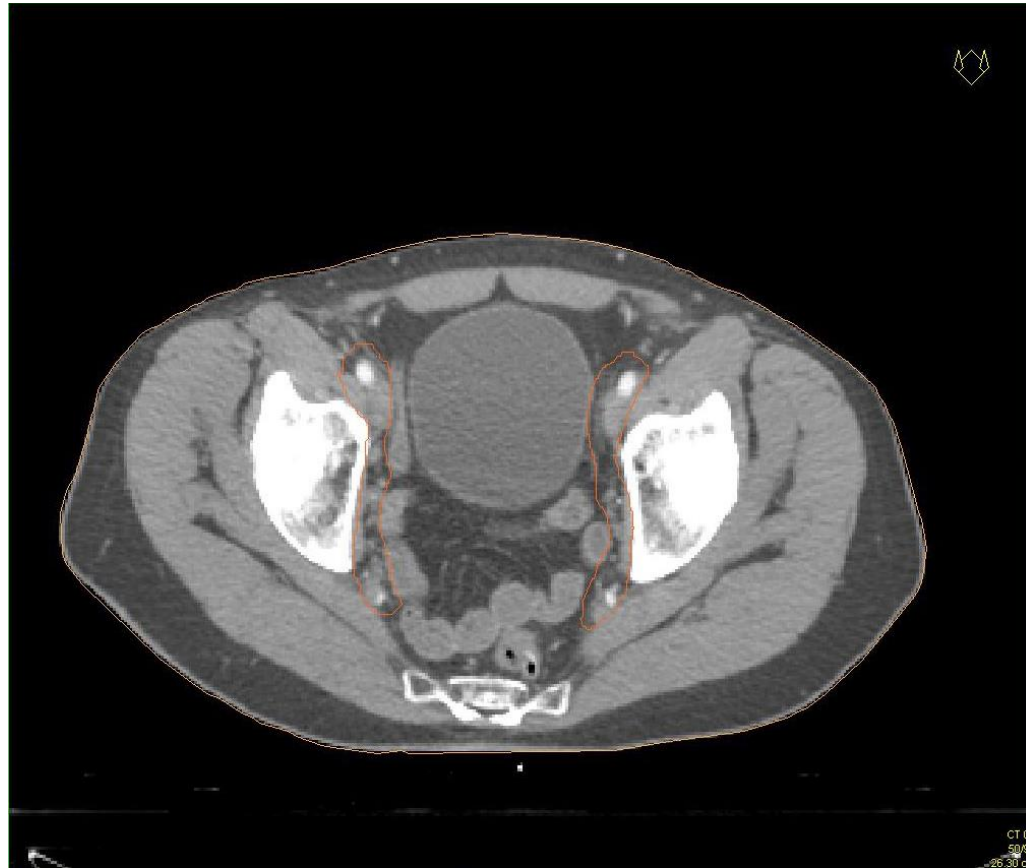


48/93

49



50



50/93

51



51/93

52



52/93

53



53/93

54



54/93

55



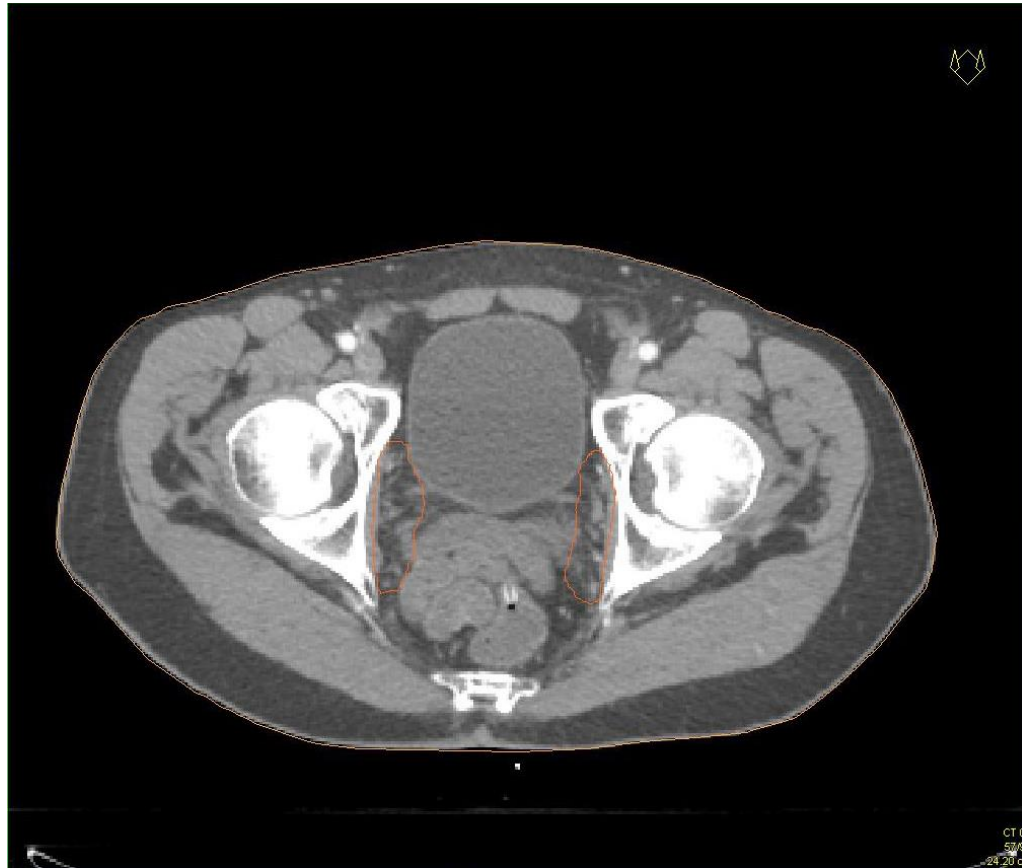
55/93

56



56/93

57



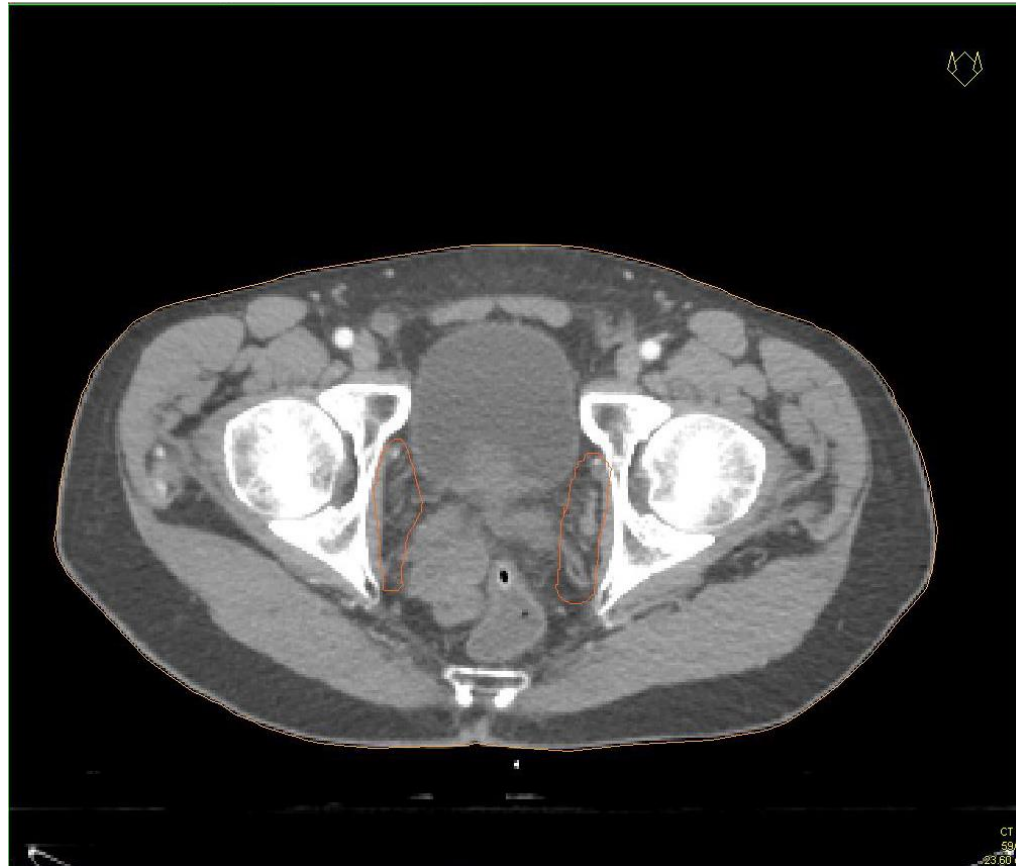
57/93

58



58/93

59



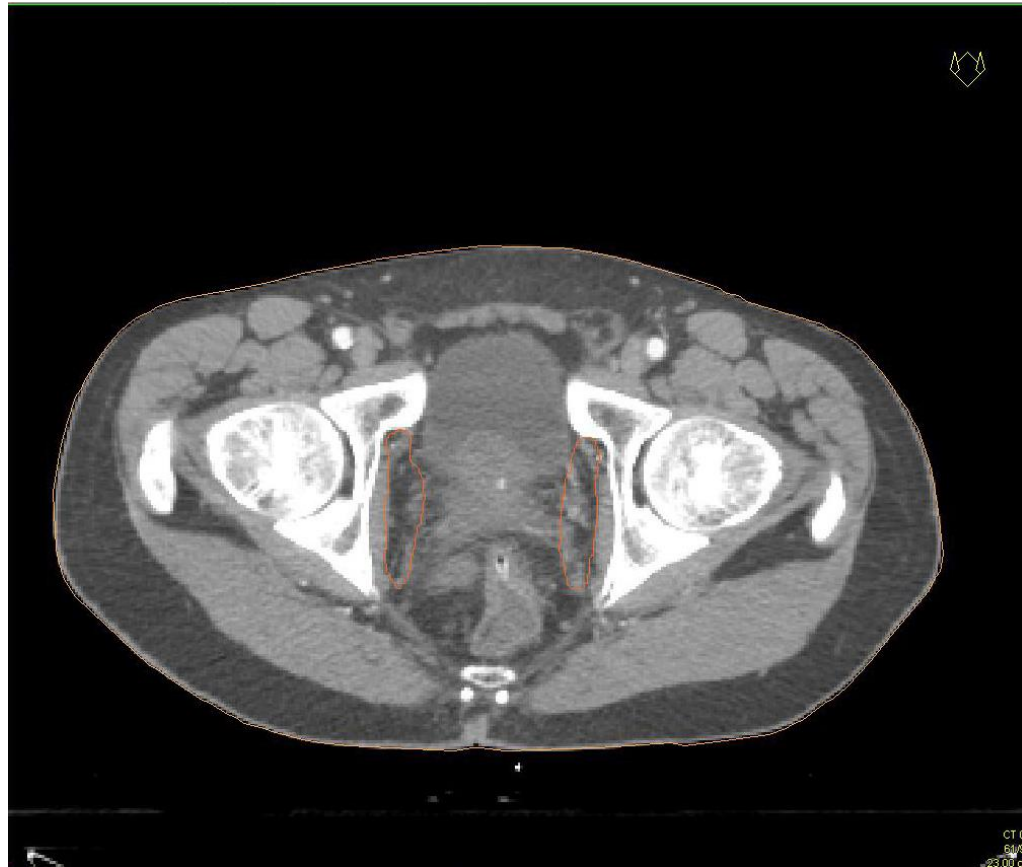
59/93

60



60/93

61



61/93

62



62/93

63



64



64/93

65

